

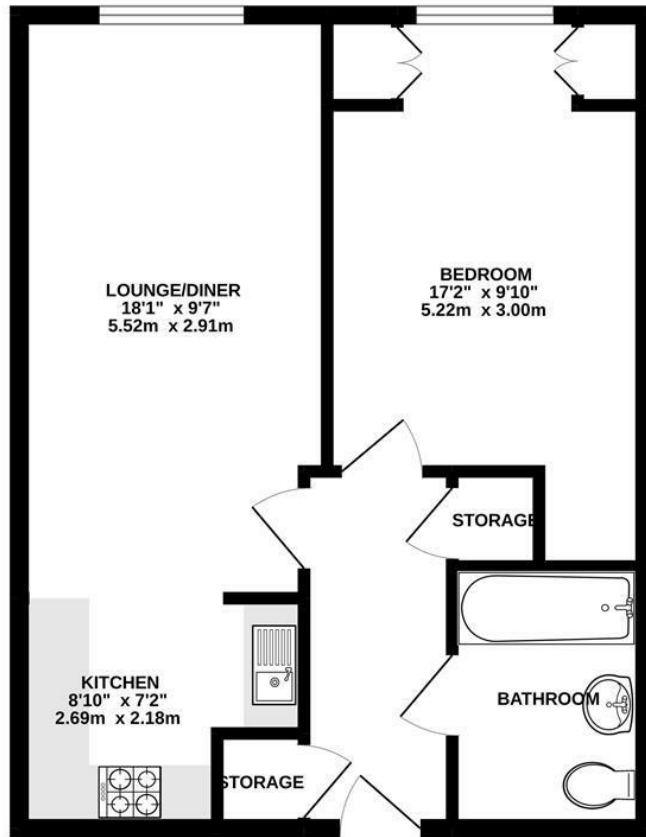
**Wood Lane
Isleworth
TW7 5FG**

£260,000

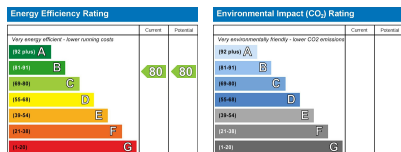
ChaseBuchanan



THIRD FLOOR
490 sq.ft. (45.5 sq.m.) approx.



TOTAL FLOOR AREA : 490 sq.ft. (45.5 sq.m.) approx.
Produced solely for Chase Buchanan
Made with Metropix ©2022



- Viewings accompanied by Chase Buchanan
- Modern top floor apartment
- Lift serviced
- Allocated parking
- Close to transport links
- Chain free

A stunning modern top floor apartment, located in a quiet development next to Osterley Sports & Athletics Centre.

The accommodation comprises an open plan living room/modern kitchen, double bedroom with a built in wardrobe and a modern bathroom. Further benefits include a further two storage cupboards, loft storage, lift to all floors, allocated parking space, communal gardens and a bike shed.

Wood Lane is within 0.42 miles from Isleworth BR Mainline Station and 0.5 miles from Osterley Tube Station (Piccadilly Line), and close to the A4, M4 and M25 with its routes into London and Heathrow.

An appointment to view is highly recommended via the vendors sole agents Chase Buchanan.

For more information or to book a viewing, please contact:

020 8758 1755

ChaseBuchanan

7 Odeon Parade, 480 London Road, Isleworth, Middlesex, TW7 4DE

Care has been taken in the preparation of these particulars, however, their accuracy is not guaranteed and they do not form part of any contract. Measurements stated must be considered maximum.